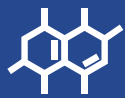




Technical Datasheet

Crystal Clear



UV Resin

Photocentric



UV Crystal Clear

Tensile Modulus (Low – High)



Shore Hardness (Soft – Hard)



Compatible Printers

UV LCD & DLP 3D
Printers

Colour



Available in
1kg bottles



Photocentric's range of Crystal Clear UV photopolymers are ideal for making clear strong objects with only minimal shrinkage. Crystal Clear UV has been specifically developed to allow the fabrication of extremely clear objects with a smooth, shiny surface finish.

Parts printed with Crystal Clear display a high accuracy and minimal shrinkage, allowing for the production of highly accurate clear models.

Crystal Clear is ideal for experiencing fast exposure times and wide exposure latitude, allowing you to hold the finest details your machine can provide. The solid material is strong, durable and long lasting, provided it is stored in dry conditions away from strong UV light.

In order to increase the clearness and shine, the printed parts can be polished and a clear lacquer spray applied.

Optimised for:

Crystal clear parts

Strong and durable

High accuracy and low shrinkage



UV Crystal Clear Properties

Tensile Properties

Young's Modulus *	2800 MPa	ASTM D638
Ultimate Tensile Strength *	65 MPa	ASTM D638
Elongation at break *	6%	ASTM D638

Flexural Properties

Flexural strength *	17 MPa	ASTM D790
Flexural Modulus *	300 MPa	ASTM D790

Impact Properties

Impact Strength Notched Izod *	4.4 kJ/m ²	ISO 180
--------------------------------	-----------------------	---------

General Properties

Hardness *	90 Shore D	ASTM D2240
Water absorption after 48hr	0.00%	wt%
Viscosity	980 cPs	At 25°C Brookfield spindle 3
Density	1.09 g/cm ³	
Storage	10<T>50°C	



We are constantly reviewing and improving our range of high-performance materials. For the very latest information, please visit the Photocentric website



Processing Instructions

Follow the procedures laid out in your 3D Liquid Crystal user manual. Resin should be poured into the tray away from direct sunlight. Resin can also be reused but should be poured through a filter to remove solid lumps. Keep hood on at all times to avoid unwanted curing or contamination. Liquid polymer is soluble in water and soap. We recommend washing parts for 5 minutes in Photocentric resin cleaner. After cleaning, objects should be post exposed for 1 hour at 60°C under UV light.

Photocentric

UK Titan House, 20 Titan Drive, Peterborough, PE1 5XN email: info@photocentric.co.uk

USA Avondale 107 - Building 'A' 855 N. 107th Ave., Suite A110, Avondale, Arizona 85323 email: info@photocentricusa.com

www.photocentricgroup.com

